

Congratulations to the GSAE Leadership Academy Class of 2019

THE GSAE LEADERSHIP ACADEMY features the most up-to-date curriculum and a capstone project to help association professionals grow in their careers. It is an excellent opportunity for association professionals to build their knowledge of organizational management, while earning up to 56 CAE hours to qualify to sit for the Certified Association Executive (CAE) exam or to recertify. Sessions also include experiential learning opportunities, tours of local associations, and an unmatched opportunity to build relationships with fellow professionals. The next Leadership Academy class will begin October 2020, and applications will be available as of July 1, 2020.

For more information, visit www.gsae.org.



Elisa Adelman, MPA
Director of Finance and Operations
Georgia Partnership for Excellence
in Education



Kara Bastarache
Specialist, Certification
American College of Rheumatology



Kelsey Battle
Association Assistant
Nardone Consulting Group



Heather Blanchard
Member Advocate/Solution
Architect
HeBlanc LLC



Jason Cline, CAE
President/CEO
Printing & Imaging Association
of Georgia



Amanda Cook
VP Business Development
Map Dynamics



Matthew Darius, MBA
Operations Manager
Southern Economic Development Co.



Michele Doyle, MBA
Association Coordinator
Nardone Consulting Group, Inc.



Betsy Eddy
Director of Events
SAHMA



Kathy Godwin
Vice President, Global
Member Services
CoreNet Global



Lisa-Marie Haygood
Executive Director
Cherokee County Educational
Foundation



Brittney Love
Director of Finance & Operations
American Council of Engineering
Companies of Georgia, Inc.



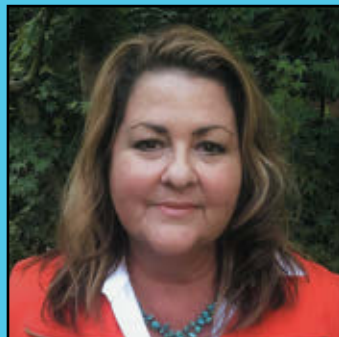
Christina Mimms
Managing Editor of Publications
Holy Innocents' Episcopal School



Jaime Morgan
Association Executive
Apartment Association of
Greater Augusta



Kevin Perry
CEO/Executive Director
Georgia Beverage Association



Dianne Sagaas
Director, Education
MISBO



Carly Sharec
Director of Communications & Events
Georgia Chiropractic Association